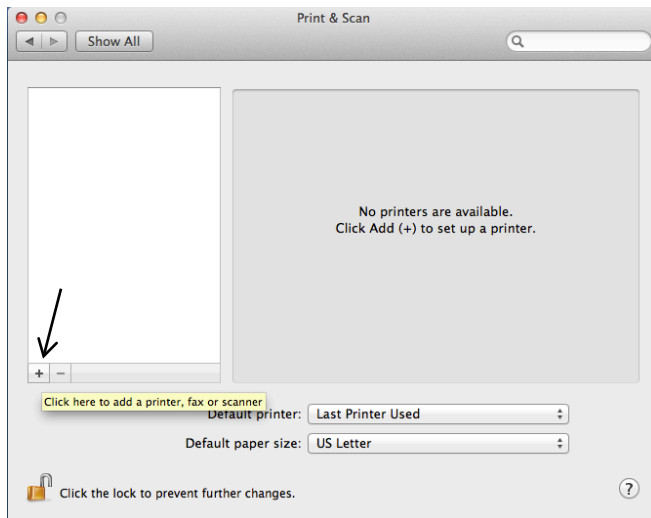
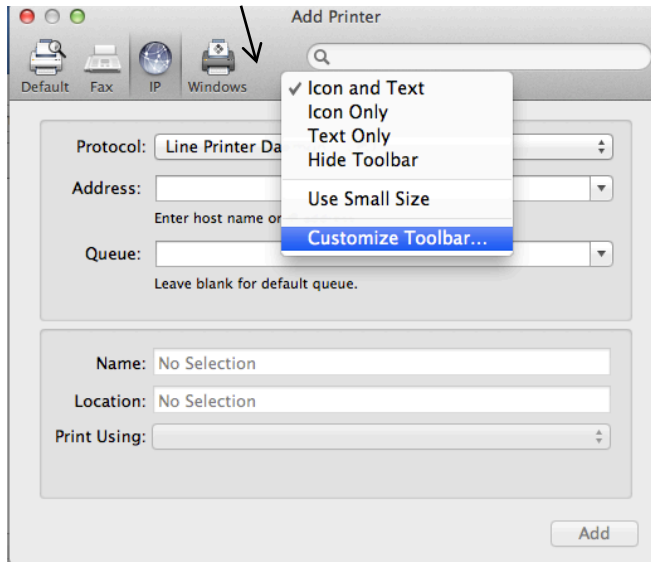


How to add a printer to your Mac

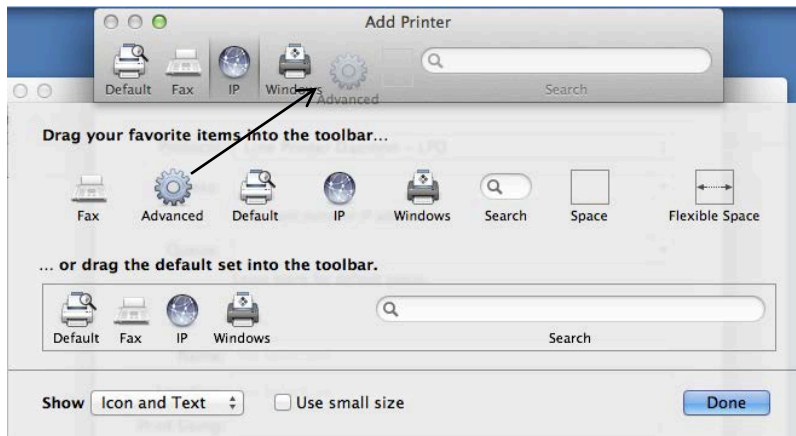
1. Go to <http://xerox.com> and install the latest driver for the Xerox Phaser 7500DX. DO NOT install the printer using the driver software wizard. Just install the printer driver.
2. Go to **System Preferences** and click on **Print & Scan**
3. Click on the Plus + button to add a printer



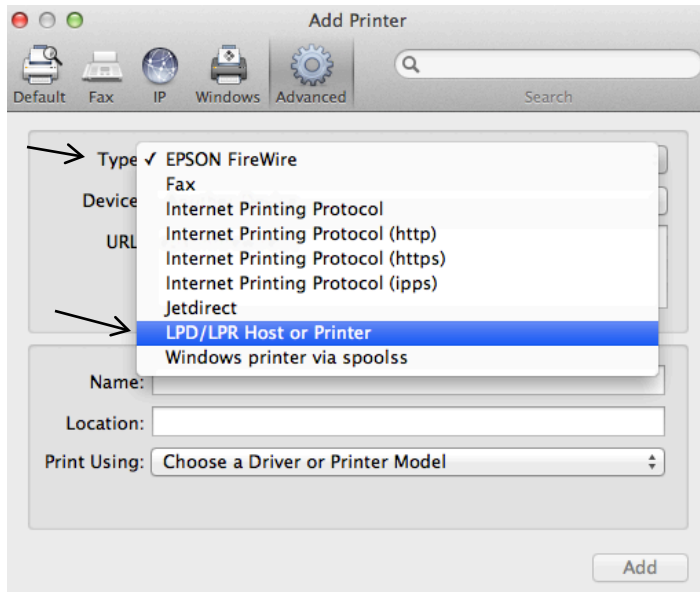
4. On the toolbar Right-Click (CTRL + Click) and select **Customize Toolbar...**



5. Drag the **Advanced** icon to your toolbar. Then click **Done**.

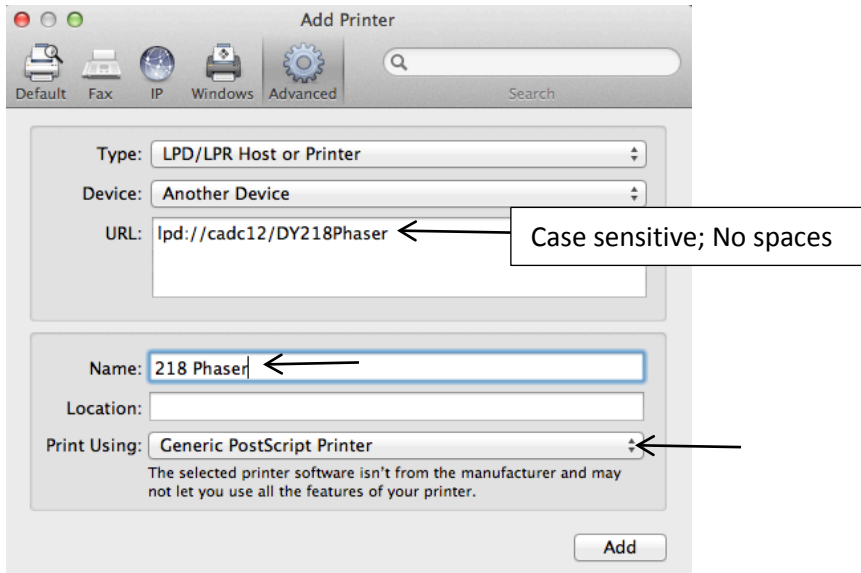


6. Your Mac will briefly search for printers on the network. When it is finished searching Click on **Type** and select **LPD/LPR Host or Printer**

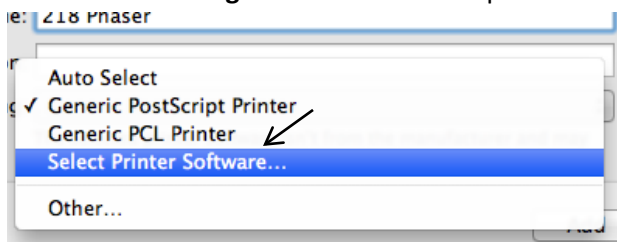


7. Please refer to the end of this document for a list of printers. **IMPORTANT:** You must type in the server and printer name exactly as it is shown in the list of printers. It is case sensitive. **DO NOT** use spaces.

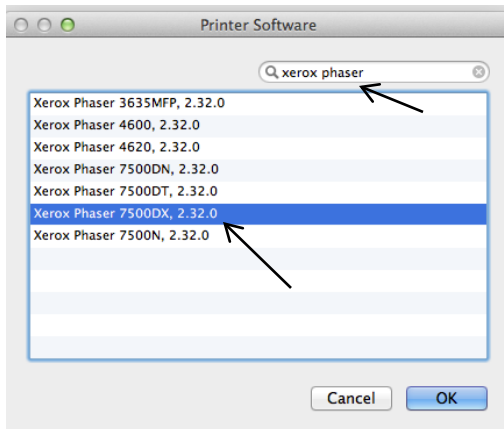
8. Using the list referenced above type in the server name and printer name you want to add to your computer. Type in the name of the printer in the **Name:**.



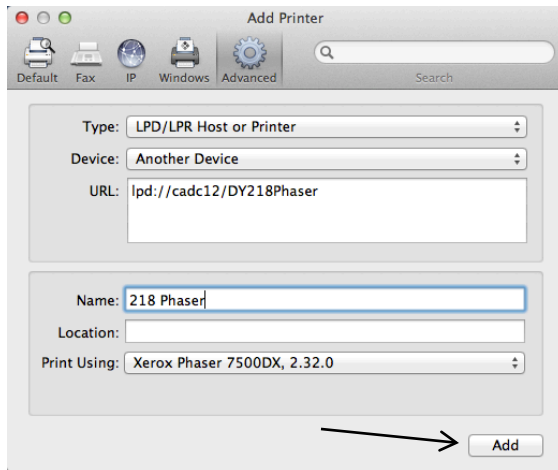
9. Click on **Print Using:** to select to correct print driver



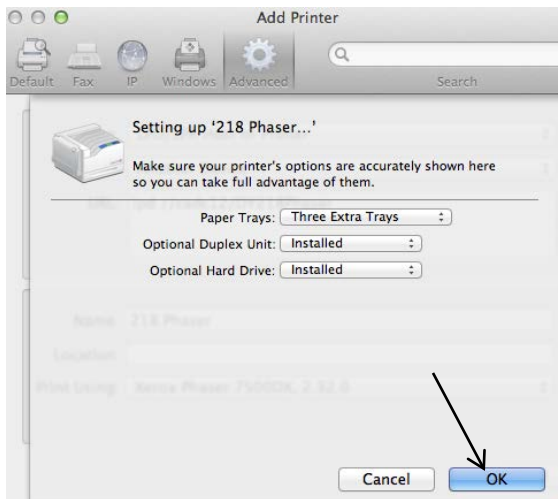
10. Type in "Xerox Phaser" in the search box and then select the correct printer driver. Click **OK**



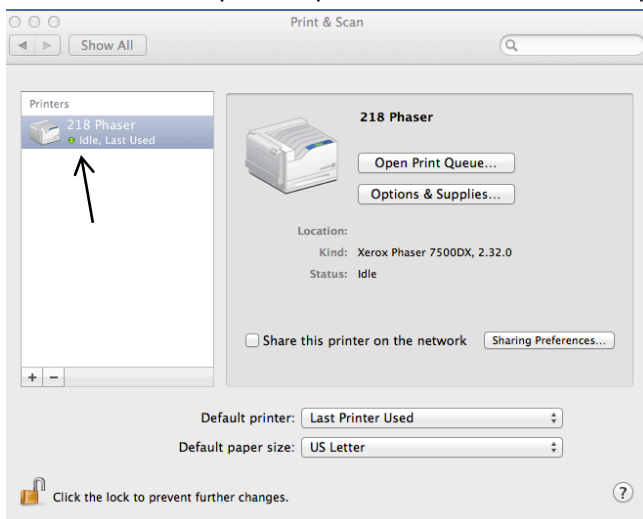
11. Click **Add**



12. Click **OK**



13. You are done! Repeat steps 6 – 12 to add additional printers



PRINTER LIST:

cadc12/DY203Phaser

cadc12/DY204Phaser

cadc12/DY218Phaser

cadc12/DY304APhaser

cadc12/DY304BPhaser

cadc12/DY318Phaser

cadc12/DY409PhaserLEFT

cadc12/DY409PhaserRIGHT